



Continental Clay is one of the largest custom blenders in the nation.

Continental Clay has been hand mixing the finest selection of stock clay bodies for 20 years. Our clay mixers are artisans in their own right. They know the subtle density and feel of each clay blended. Water content is weighed and recorded for each batch, ensuring quality control and consistency of the millions of pounds of clay that pass through our hands each year.

Most artists use our premium stock clay. We are also the region's preferred producer of custom blended clay. We will mix an existing formula or suggest alterations and modifications to suit the desired color, texture or performance of any clay.

Premixed dry of any stock clay body is available by special order. Add \$5.00 per hundred lbs.

Combine quantities of our stock clays for better price breaks.

Non Toxic - All of our wet stock clays conform to ASTM D-4236 and have been certified to contain no materials in sufficient quantities to be toxic or injurious to humans or to cause acute or chronic health problems.

Dry clays are not certified to be non-toxic.

GROLLEG PORCELAIN

Cone 8-10 Code: CCGP

This classic porcelain clay body is made with Grolleg kaolin from England for whiteness and plasticity, with finely ground flint added for translucency. A smooth, creamy formula that throws and handles like traditional handcrafted porcelain. Thin areas are translucent and clay is vitreous at cone 10. Light cream in oxidation and glassy white in reduction.



Cone 10



Cone 10 - Reduced

GROLLEG PORCELAIN WITH NYLON FIBER

Cone 8-10 Code: CCGPF

Our classic Grolleg Porcelain with an addition of half-inch long nylon fiber strands that are basically undetectable. This modification allows you to work with the porcelain in ways not always possible. Fibers allow thinner slabs, thinner throwing, and provide greater green strength before delicate pieces are fired. You may notice fibers while trimming, but they disappear and leave no trace after work is fired.



Cone 10



Cone 10 - Reduced

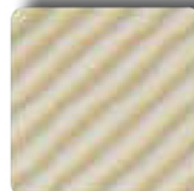
DOMESTIC PORCELAIN

Cone 8-10 Code: CCDP

Domestic Porcelain is a wonderfully responsive and easy-to-throw porcelain body made with U.S. kaolins and clays. Has all the qualities of traditional porcelain but is easier to throw and is an affordable alternative. Beautifully smooth and vitreous at cone 10. Cream white in oxidation and gray white in reduction.



Cone 10

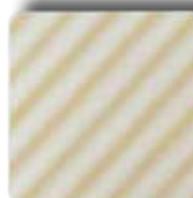


Cone 10 - Reduced

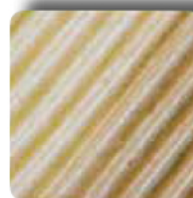
B CLAY

Cone 5-10 Code: CCBC

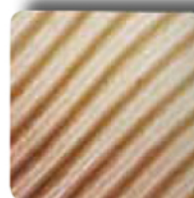
B Clay, one of our newest clays to complement our white cone 10 selections, is a porcelain-stoneware blend. It has a wonderfully smooth surface that shows beautiful blush tones in reduction, soda, and wood firing. Glazes look amazing over this clay. Great for large forms with minimal cracking. Where it might feel firm in the bag, B Clay responds immediately and forms beautifully. Cream white in oxidation and white in reduction.



Cone 9



Cone 10 - Reduced



Cone 10 - Soda