

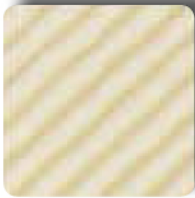
Cone 10 - Reduced



Cone 10 - Soda



Cone 6



Cone 9



Cone 9 - Reduced



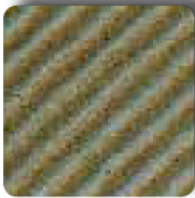
Cone 10



Cone 10 - Reduced



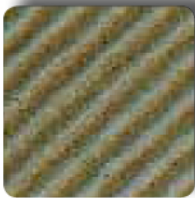
Cone 10



Cone 10 - Reduced



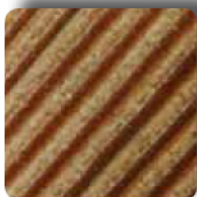
Cone 10



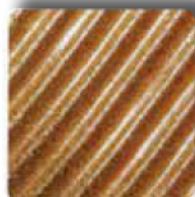
Cone 10 - Reduced



Cone 10



Cone 10 - Reduced



Cone 10 - Soda

WOOD FIRE PORCELAIN

Cone 8-10 Code: CCWFP

Our Wood Fire Porcelain is made with domestic clays. It is very easy to handle and throw. Its soft subtle surface lends itself to dramatic flashing effects unique to wood firing. Can withstand extreme kiln conditions. Warm peach flashing in reduction.

SUPER WHITE

Cone 5-9 Code: CCSW

Get the look and feel of high fire porcelain at cone 6! This bright white, mid-range firing combination of Grolleg porcelain and domestic clays is formulated for whiteness, strength and ease of handling. It imparts the glassiness and brilliance of porcelain while affording the workability of stoneware. Vitreous at cone 6 but can be fired as high as cone 10. White to creamy white in oxidation. Gray-white color in reduction.

FIRECLAY STONEWARE

Cone 8-10 Code: CCFCs

Fireclay Stoneware is one of our most popular cone 10 stoneware clays. It is widely used by production potters and in large ceramic programs. Contains fireclay, sand and fine grog for moderate tooth. A wide range of clay particle sizes gives exceptional green and fired strength. Great for thrown and hand-built work large or small. Fires tan/gray in oxidation, gray/brown with iron spotting in reduction.

FIRECLAY STONEWARE WITH IRON

Cone 8-10 Code: CCFCSI

Our very popular Fireclay Stoneware body but with the addition of a small percentage of red iron for a warmer background clay color in reduction. The warmer body color will also enhance glaze results. Fires tan-gray in oxidation and gray-brown in reduction.

TABLEWARE STONEWARE

Cone 8-10 Code: CCTW

Tableware Stoneware is especially suited for functional work. It has exceptional plasticity for throwing and enhanced resistance to thermal shock. Excellent choice for large forms. Contains small amounts of extra fine grog and sand. Ideal for pots fired in reduction. Slight iron content gives warm background clay body color.

TABLEWARE STONEWARE WITH NO OXIDES

Cone 8-10 Code: CCTWNO

Our same great formula as the Table Stoneware but with iron oxide for darker body color removed. The result is a more neutral body color in reduction.

SODA CLAY

Cone 10 Code: CCSODA

Soda Clay is a plastic, slightly coarse clay that throws wonderfully and offers distinctive color tones unique to soda firing. Has a distinctive feel on the wheel and trims well. Can be fired successfully in soda or wood with orange-brown flashing highlights.