

## Prepared Clay

### 50/50 STONEWARE

**Cone 8-10 Code: CCSTFF**

50/50 is a combination of two of our high performance stonewares. Fireclay with Iron is used for its versatility and strength, Buff Stoneware for its plasticity and performance. This clay is fun to throw and responds almost effortlessly. Fires a rich, golden orange-brown color with iron specks in reduction.

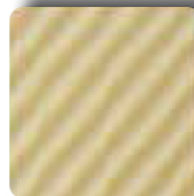


Cone 10 - Reduced

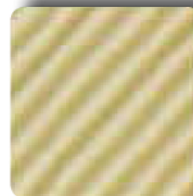
### BUFF STONEWARE

**Cone 6-10 Code: CCBS**

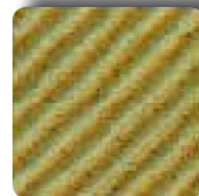
Buff Stoneware's versatility makes it one of our most popular clays used in schools and is a primary choice for potters. A terrific throwing body and ideal from functional work to tiles. A smooth textured, super plastic cone 6 to 10 clay body formulated without fireclay. Contains sand for strength. Khaki color fired in cone 6 oxidation. Rich warm brown color with slight iron spotting in cone 10 reduction.



Cone 6



Cone 10

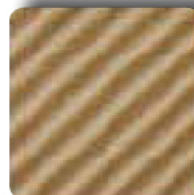


Cone 10 - Reduced

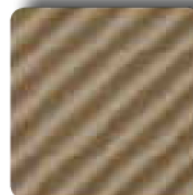
### BUFF STONEWARE WITH OCHRE

**Cone 6-10 Code: CCBSO**

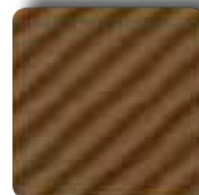
The qualities of our popular Buff Stoneware with a small addition of ochre for added color. This mixture with ochre has the same great throwability and strength as Buff Stoneware. The ochre enhances glaze results and provides a darker background. Medium brown color in oxidation, deep rich dark brown in reduction.



Cone 6



Cone 10

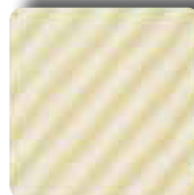


Cone 10 - Reduced

### HI-FIRE WHITE STONEWARE

**Cone 6-10 Code: CCHFW**

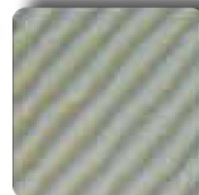
This cream colored high-fire stoneware body is formulated for strength, plasticity and whiteness. Its texture is smooth and because of its plasticity it is very popular for wheel work. Strong at cone 6 or cone 10. This clay fires creamy white in oxidation and rich gray in reduction.



Cone 6



Cone 10

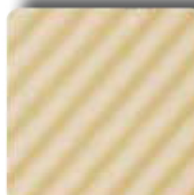


Cone 10 - Reduced

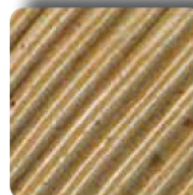
### HI-FIRE WHITE WITH GROG

**Cone 6-10 Code: CCHFWG**

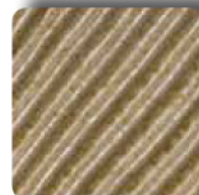
Formulated for those who love Hi-Fire White but want to work larger forms, slabs or tile projects. Has great throwing qualities too. Grog helps buffer the shrinkage and alleviates cracking. Color is the same as Hi-Fire white in oxidation and reduction.



Cone 6



Cone 10

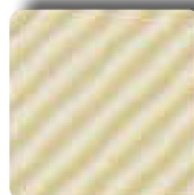


Cone 10 - Reduced

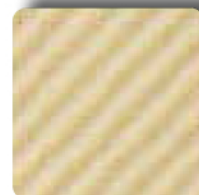
### MID-FIRE WHITE

**Cone 4-7 Code: CCMFW**

Mid-Fire White is a versatile, economical, cream colored clay body primarily for throwing. Our smoothest, finely-particled white stoneware body for cone 6. Dense and strong. Contains a small amount of fine, white sand. Although commonly used at cone 6, this clay has also been used successfully in salt/soda firing up to cone 11. Fires cream in oxidation.



Cone 6

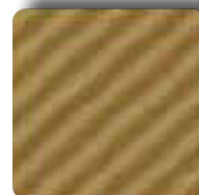


Raku Cone 10

### MID-RANGE OXIDATION BODY

**Cone 4-8 Code: CCMROB**

This clay has been specifically formulated for workability on the wheel. Ideal for production and school use. Easy on your hands yet has enough extra fine grog for strength. A warm orange-brown color in cone 6 electric kiln firings. Not recommended for reduction.



Cone 6